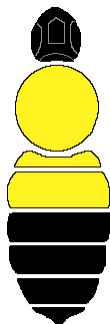




Common Eastern  
*B. impatiens*



Two-spotted  
*B. bimaculatus*



Confusing  
*B. perplexus*



Half-black  
*B. vagans*



Northern Amber  
*B. borealis*



Red-belted\*\*  
*B. rufocinctus*



Lemon Cuckoo  
*B. citrinus*



**Gypsy Cuckoo**  
***B. bohemicus***

## BUMBLE BEES OF

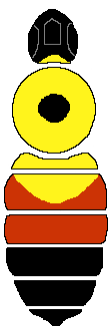


## SOUTH-CENTRAL ONTARIO

See reverse for guide key\*



Yellow-banded  
*B. terricola*



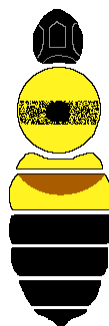
Red-belted\*\*  
*B. rufocinctus*



Tri-coloured  
*B. ternarius*



Brown-belted  
*B. griseocollis*



Rusty-patched  
*B. affinis*

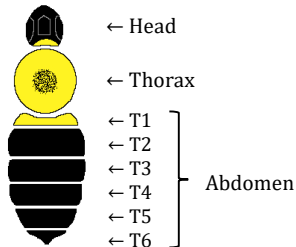
# BUMBLE BEE



# GUIDE KEY

RECOVERY • CONSERVATION • KNOWLEDGE

\*This guide is meant for use as a quick reference for identifying the 10 most common bumble bee species and 3 at-risk species found in South-Central Ontario. We have only provided the most common colour pattern(s) for each species. If you encounter a bumble bee that does not match any of the bees in this guide, please refer to a more comprehensive resource, or email us at: [ontariobeecitsci@wildlifepreservation.ca](mailto:ontariobeecitsci@wildlifepreservation.ca)



## SPECIES CATEGORIES (see reverse)

Yellow and black bees

Bees with red/orange

Bees with brown/rust

### Rare and declining species

Cuckoo bees (nest parasites)

Most commonly confused with Rusty-patched

\*\* Highly variable species (not all patterns shown)

This guide works best for queen and worker bumble bees; males are difficult to identify to species by colour. Male bumble bees have an extra abdominal segment, longer antenna, are often shaggier, and emerge later in the season.

Bumble bee body schematic used with permission © M. Evans