



LOGGERHEAD SHRIKE RECOVERY IN ONTARIO

Helmi Hess (she/her)
Recovery Biologist
Wildlife Preservation Canada

Carden Field Naturalists

September 11, 2024

Parts adapted from Hazel Wheeler, Conservation Programs Director WPC



Canada's last
defence for
endangered
species.





What is a shrike?



Loggerhead vs. Northern Shrike





Clark's Nutcracker



Northern Mockingbird



Townsend's Solitaire



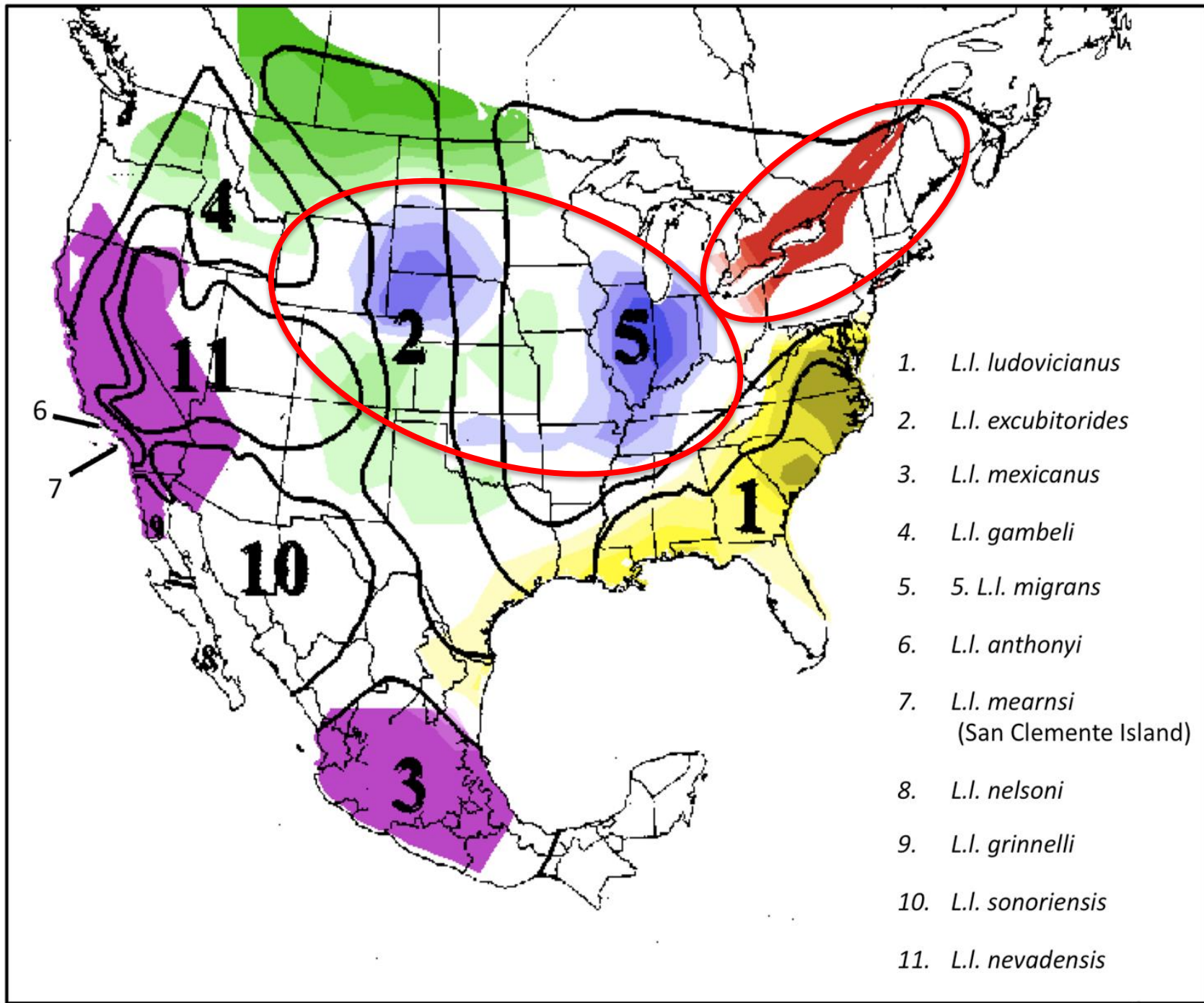
Eastern Kingbird



 Breeding

 Year-round

 Wintering



COSEWIC
Assessment and Status Report

on the

Loggerhead Shrike
Lanius ludovicianus

Prairie subspecies - *Lanius ludovicianus excubitorides*
Eastern subspecies - *Lanius ludovicianus* ssp.

in Canada



Plight of the *Lanius ludovicianus migrans*

Prairie subspecies - THREATENED
Eastern subspecies - ENDANGERED
2014

Prairie subspecies - THREATENED
Eastern subspecies - ENDANGERED
2014



Plight of the *Lanius ludovicianus migrans*

1st Ontario Breeding Bird Atlas

- Conducted 1981-1985
- Found in 145 plots

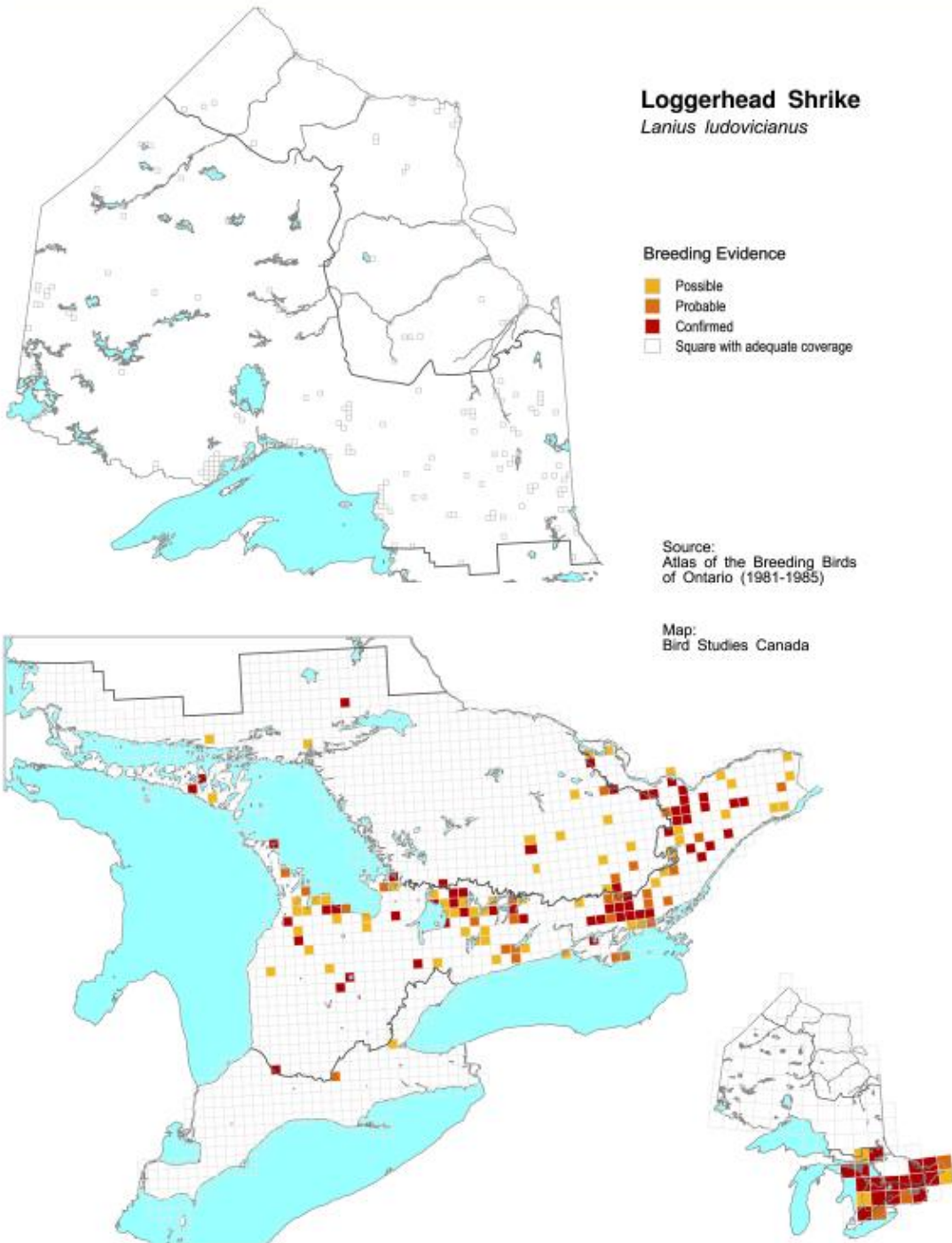
Loggerhead Shrike *Lanius ludovicianus*

Breeding Evidence

- Possible
- Probable
- Confirmed
- Square with adequate coverage

Source:
Atlas of the Breeding Birds
of Ontario (1981-1985)

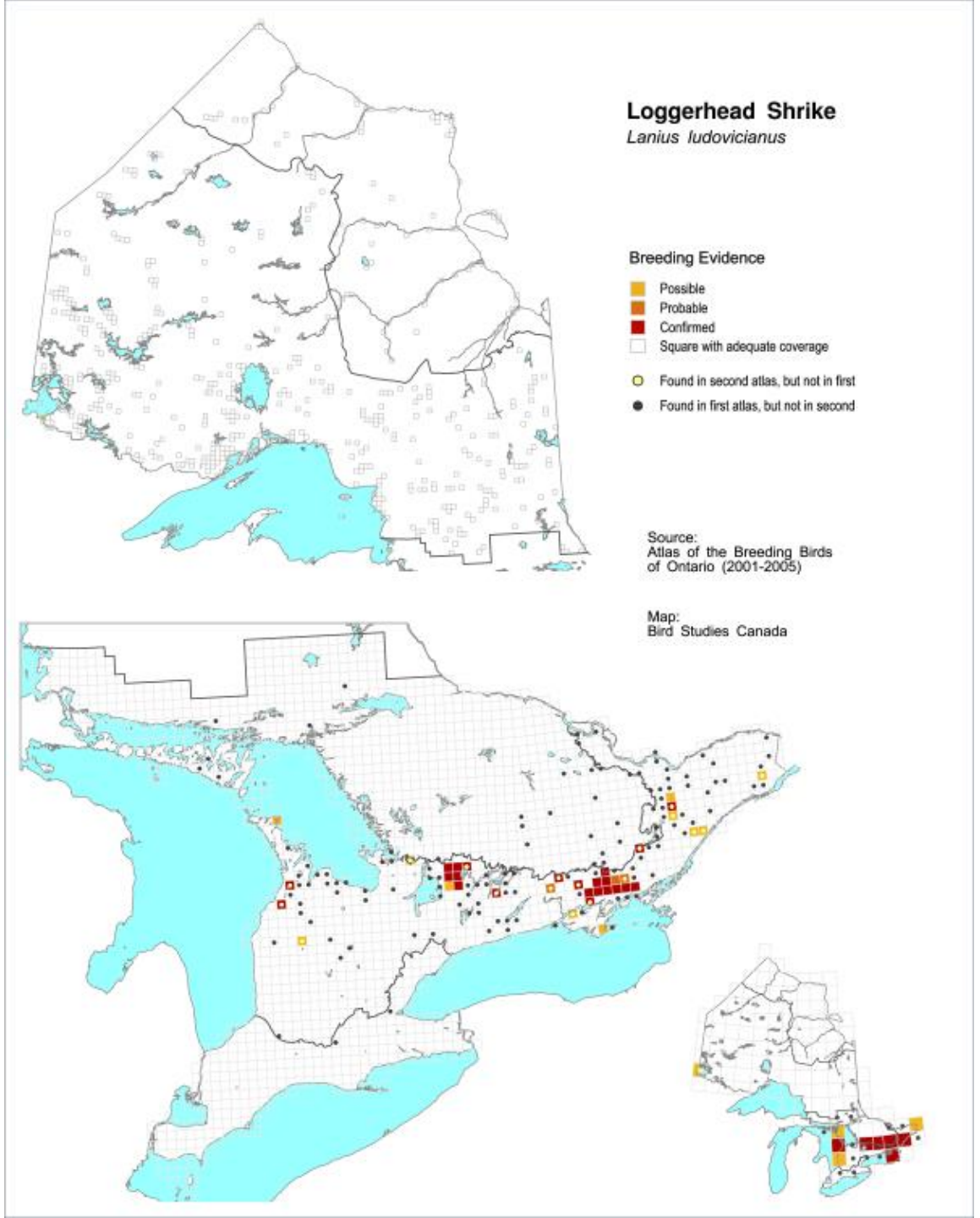
Map:
Bird Studies Canada



Plight of the *Lanius ludovicianus migrans*

2nd Ontario Breeding Bird Atlas

- Conducted 2001-2005
- Found in 38 plots

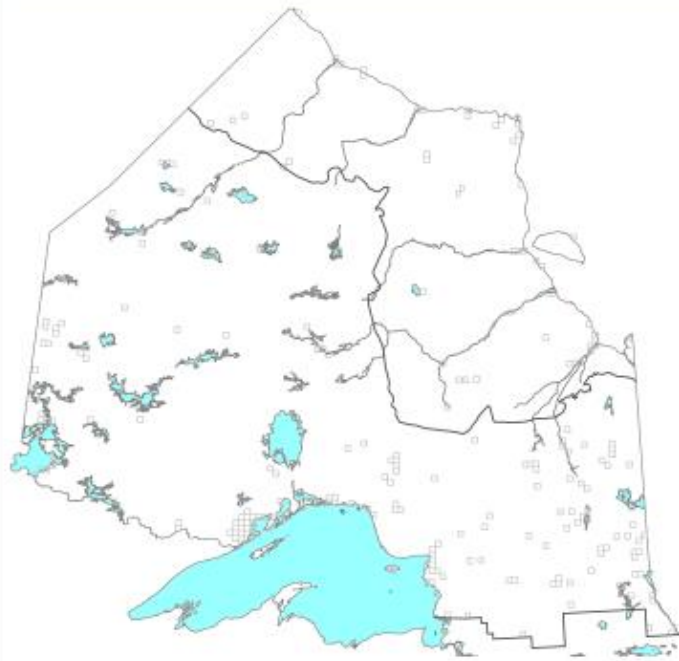


Loggerhead Shrike
Lanius ludovicianus

- Breeding Evidence**
- Possible
 - Probable
 - Confirmed
 - Square with adequate coverage

Source:
Atlas of the Breeding Birds
of Ontario (1981-1985)

Map:
Bird Studies Canada

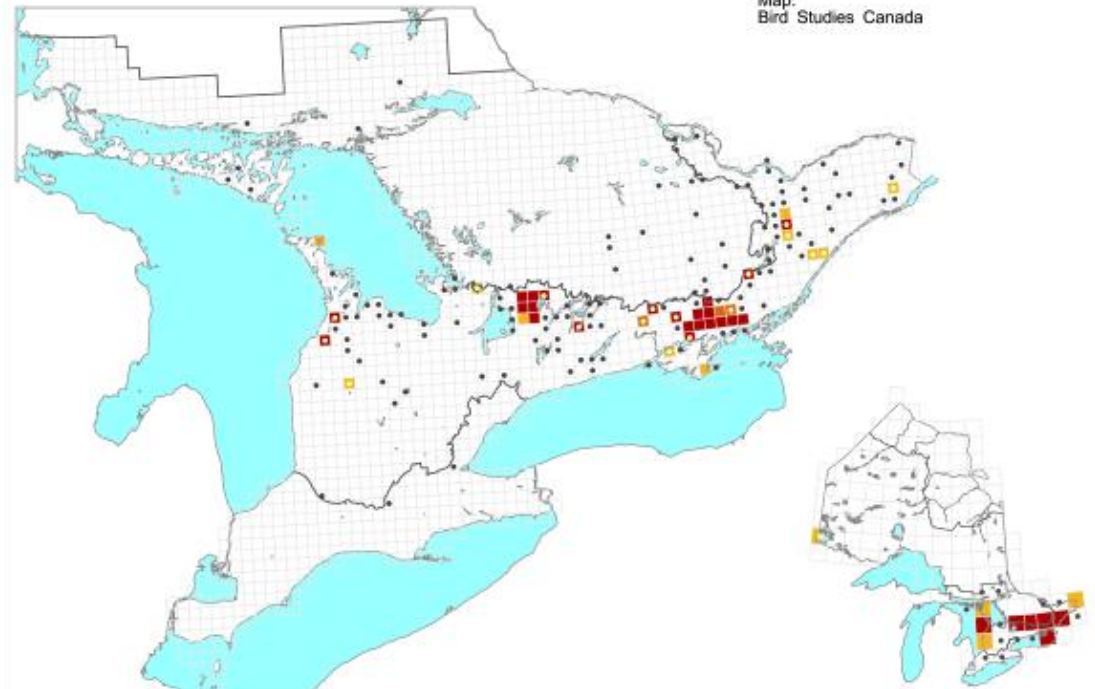
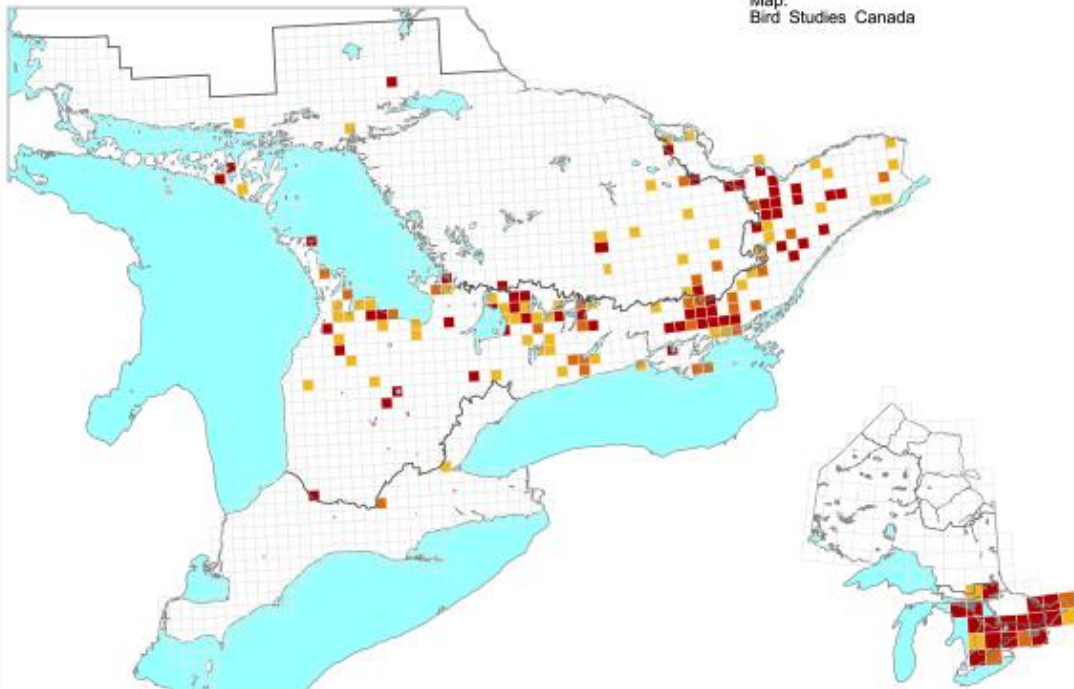
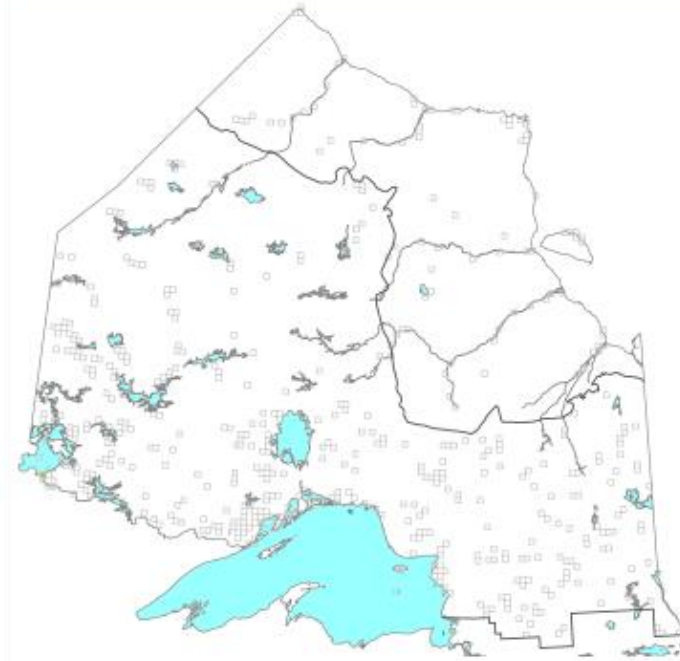


Loggerhead Shrike
Lanius ludovicianus

- Breeding Evidence**
- Possible
 - Probable
 - Confirmed
 - Square with adequate coverage
 - Found in second atlas, but not in first
 - Found in first atlas, but not in second

Source:
Atlas of the Breeding Birds
of Ontario (2001-2005)

Map:
Bird Studies Canada



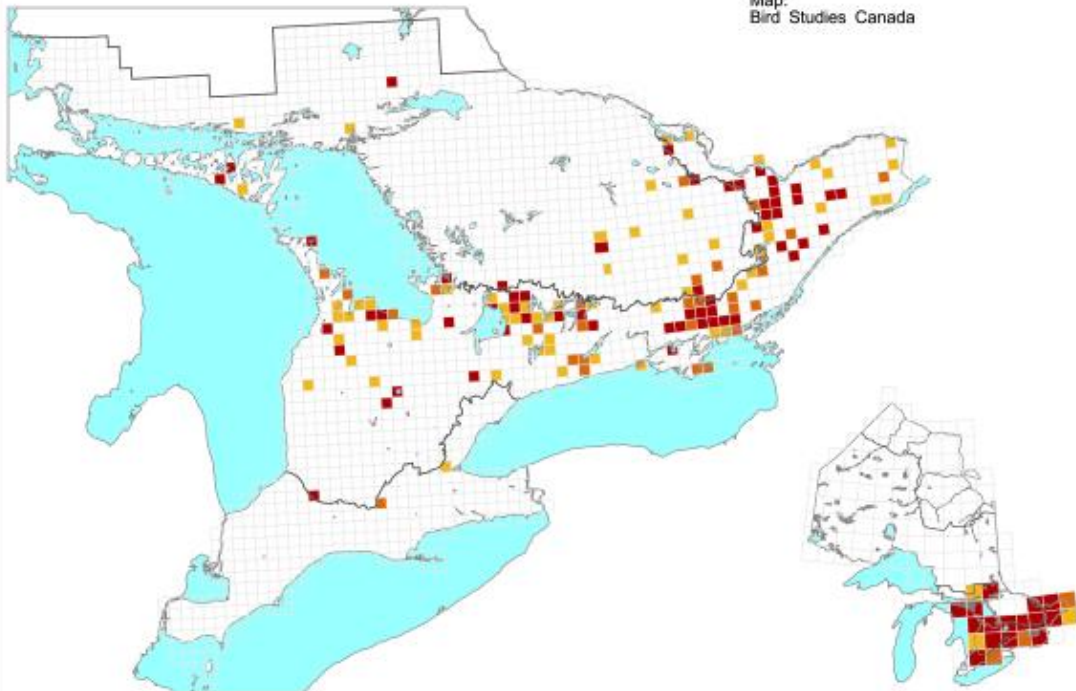
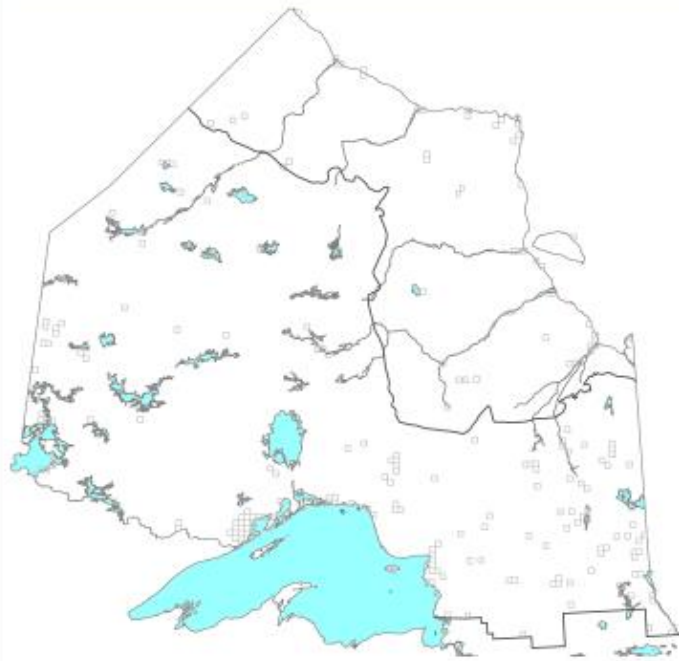
Loggerhead Shrike *Lanius ludovicianus*

Breeding Evidence

- Possible
- Probable
- Confirmed
- Square with adequate coverage

Source:
Atlas of the Breeding Birds
of Ontario (1981-1985)

Map:
Bird Studies Canada



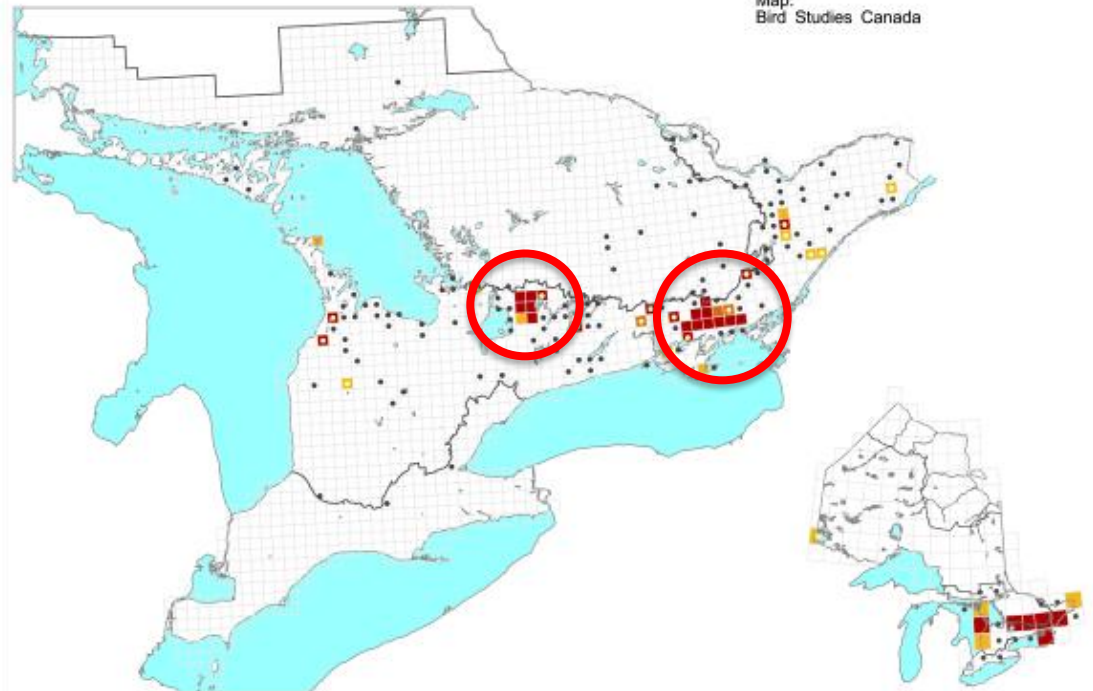
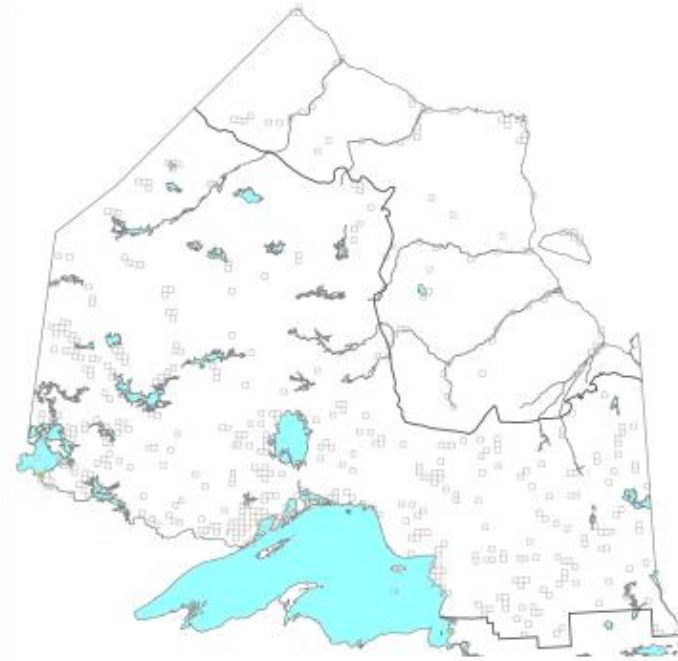
Loggerhead Shrike *Lanius ludovicianus*

Breeding Evidence

- Possible
- Probable
- Confirmed
- Square with adequate coverage
- Found in second atlas, but not in first
- Found in first atlas, but not in second

Source:
Atlas of the Breeding Birds
of Ontario (2001-2005)

Map:
Bird Studies Canada



Manitoulin



Pembroke/Renfrew



Smiths Falls



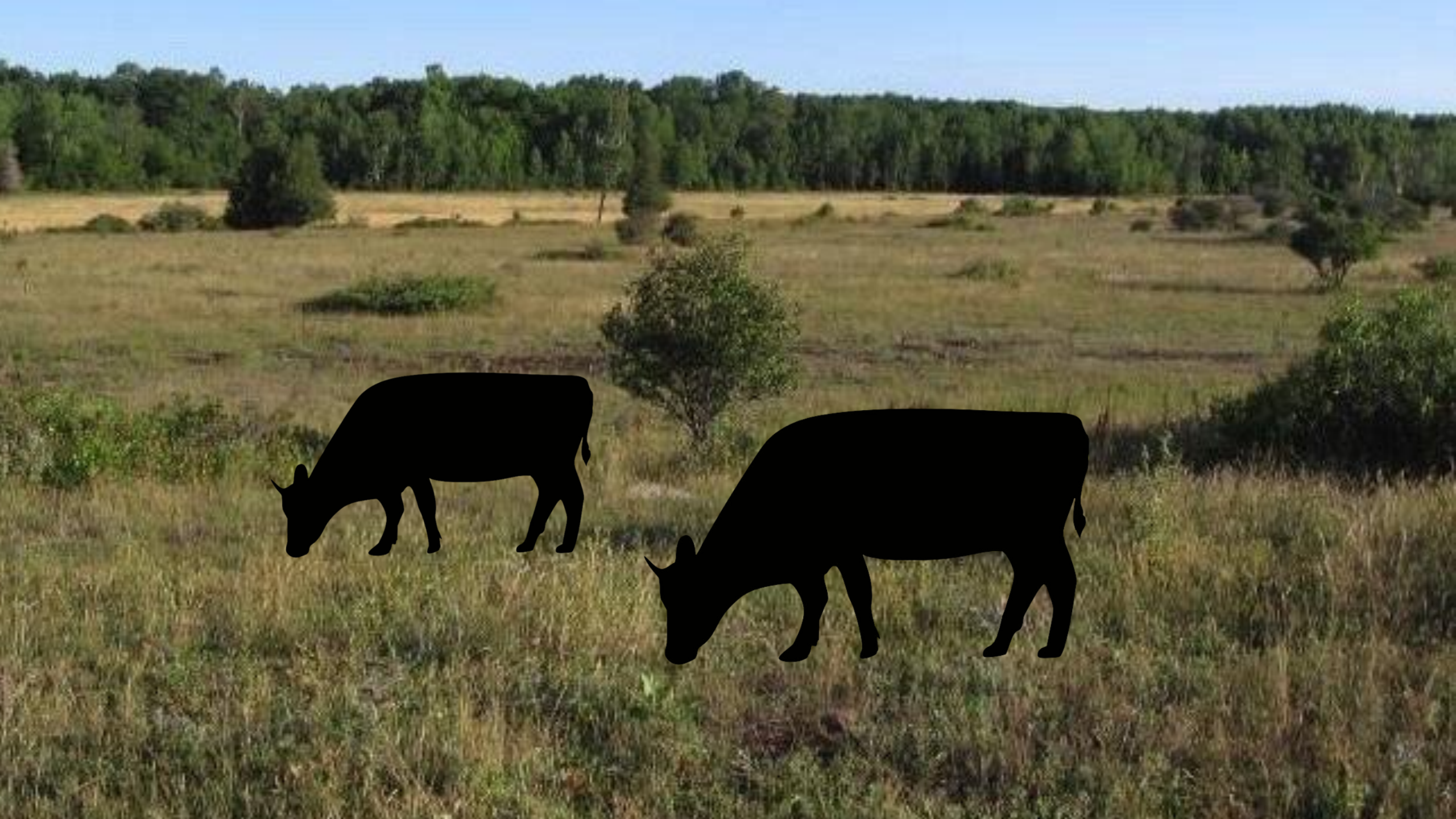
Grey-Bruce



Carden



Napanee



Limiting factors:

- Habitat loss
- Predation
- Road-related mortality
- Pesticides
- Climate change
- Disease (WNV)





Limiting factors:

- Habitat loss
- Predation
- Road-related mortality
- Pesticides
- Climate change
- Disease (WNV)



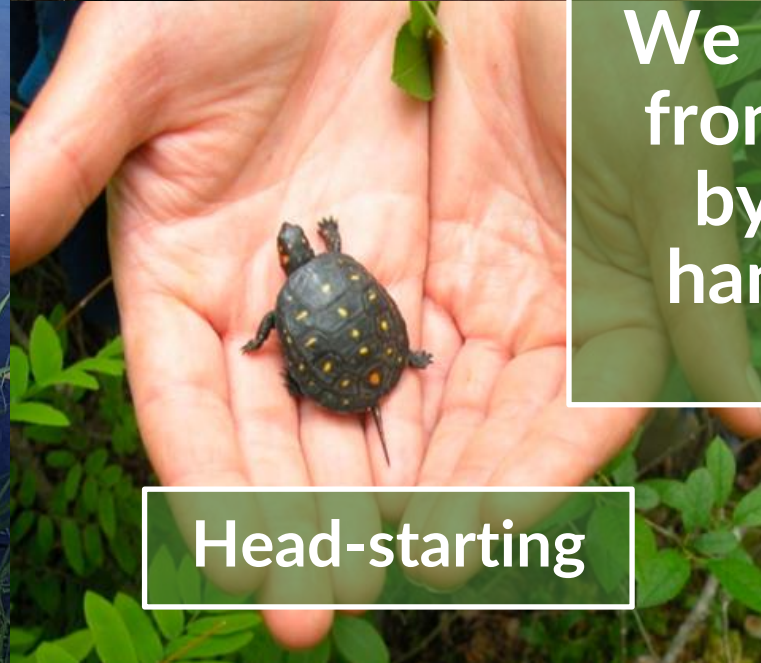
What are we doing to help?

Conservation
breeding and release

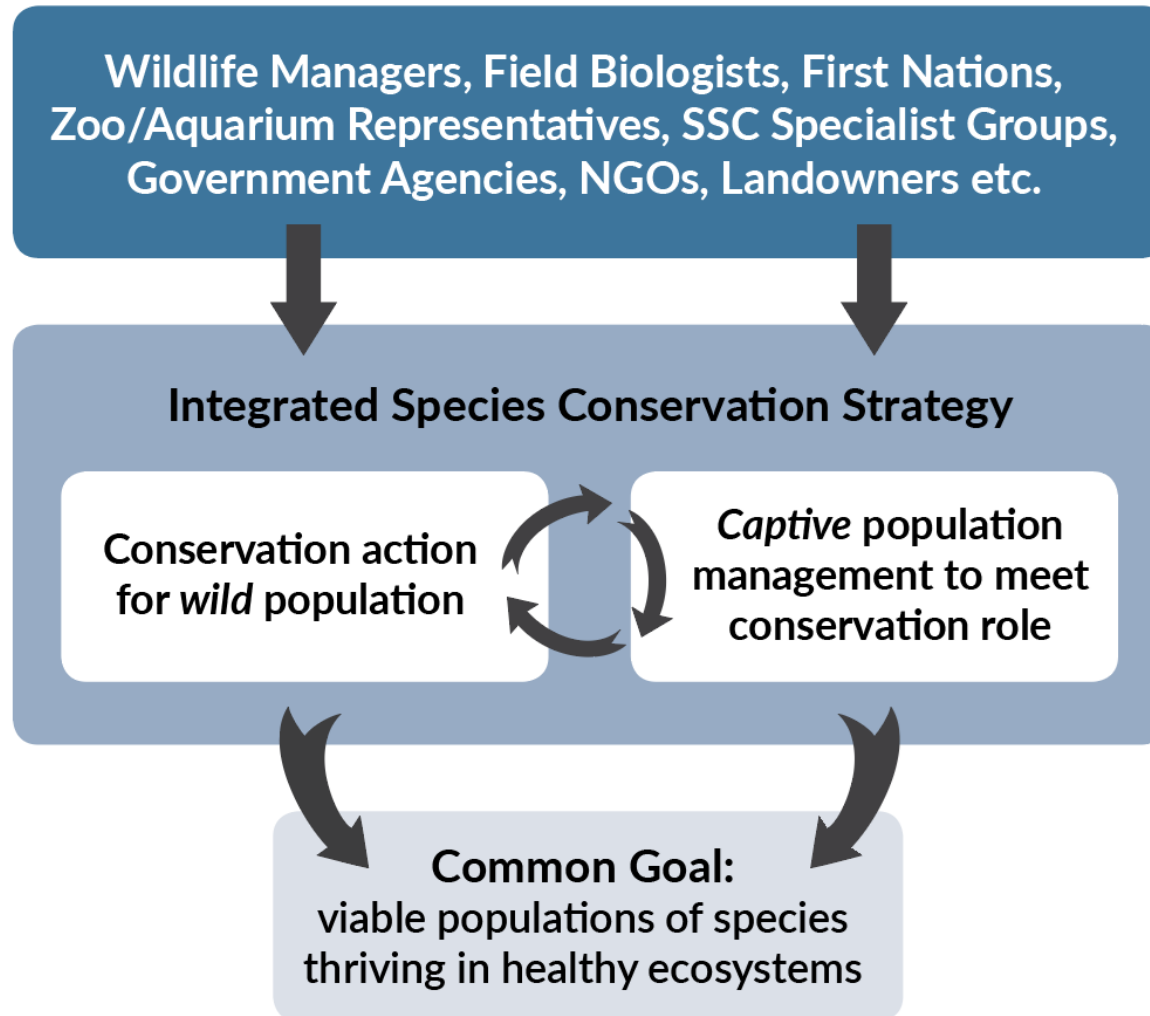
Translocation
&
reintroduction

We save animals
from extinction
by providing
hands-on care

Head-starting



One Plan Approach



wildlifepreservation.ca

Canada's last
defence for
endangered
species.

Recovery approach:

A thriving population of Loggerhead Shrikes in eastern Canada that lives in harmony with local communities




- Habitat stewardship
- Conservation breeding
- Population monitoring
- Range-wide collaboration



Loggerhead Shrike Recovery




Habitat stewardship




Habitat needs:

1. Nest sites
2. Perches
3. Hunting areas
4. Impaling sites



Habitat needs:

1. Nest sites
2. Perches
3. Hunting areas
4. Impaling sites



Habitat needs:

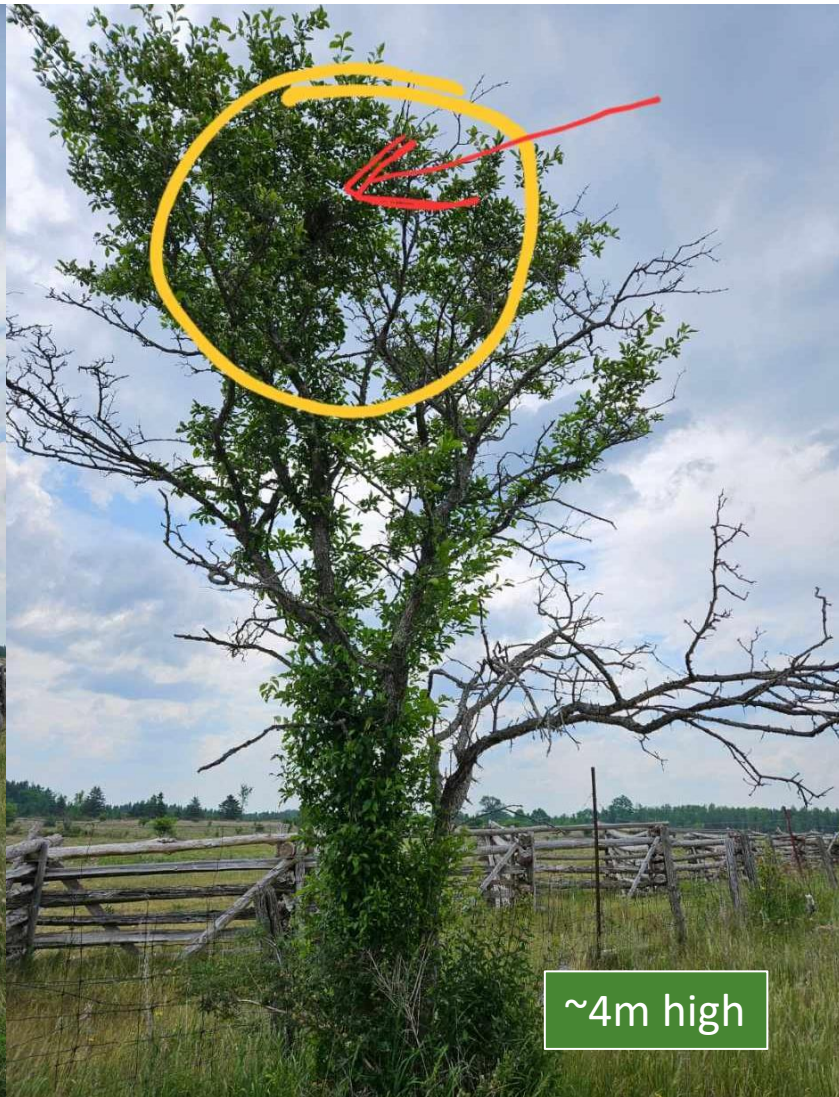
1. Nest sites
2. Perches
3. Hunting areas
4. Impaling sites



Habitat needs:


1. Nest sites
2. Perches
3. Hunting areas
4. Impaling sites





~4m high



A wide, flat field with a line of trees in the distance under a cloudy sky. The field is covered in dry, brownish grass and patches of green. A dirt path or road runs through the field from the foreground towards the background. The sky is filled with heavy, grey clouds, with some blue visible near the horizon.

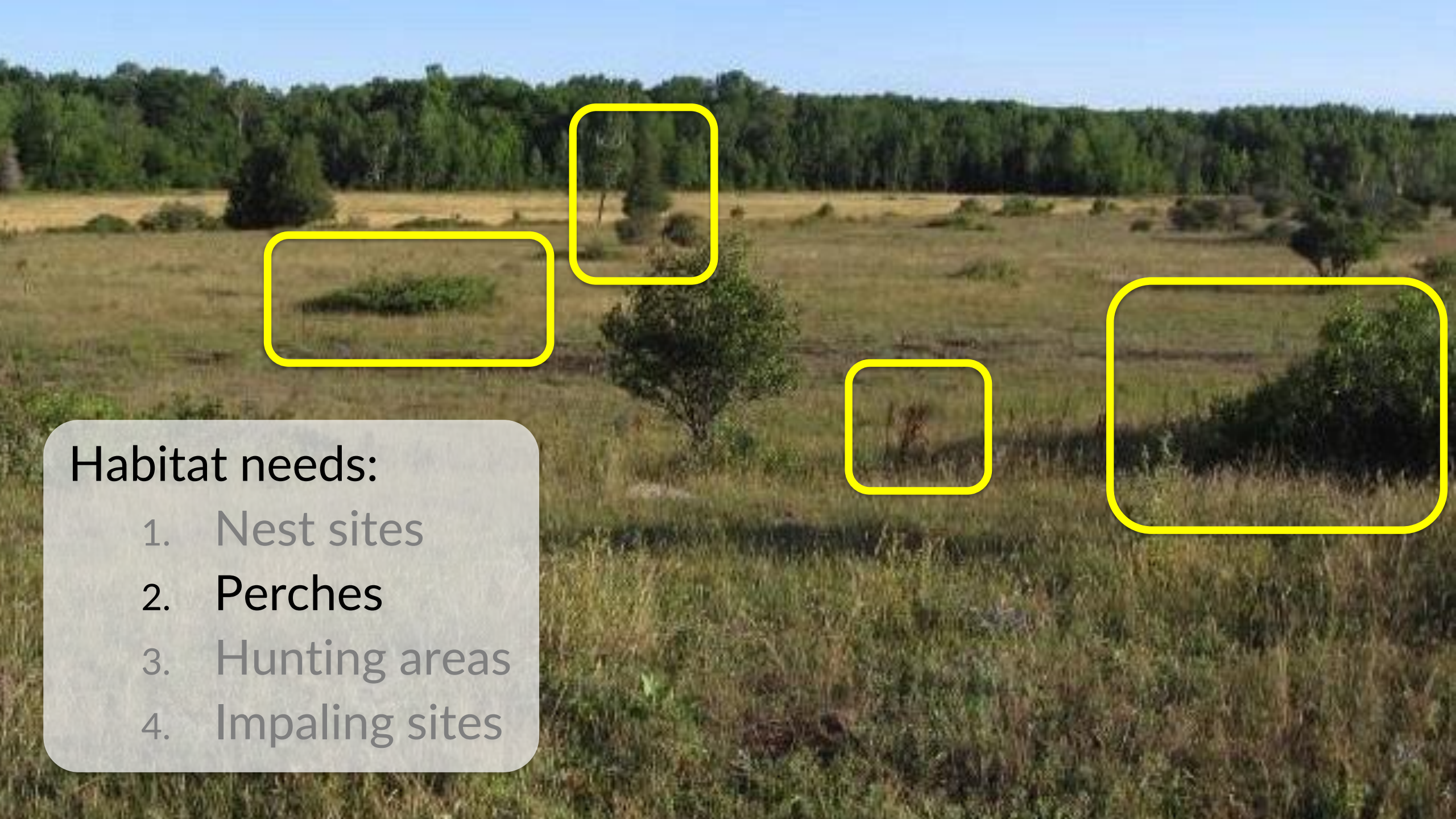
Habitat needs:

1. Nest sites
2. **Perches**
3. Hunting areas
4. Impaling sites



Habitat needs:

1. Nest sites
2. **Perches**
3. Hunting areas
4. Impaling sites




Habitat needs:

1. Nest sites
2. Perches
3. Hunting areas
4. Impaling sites



Habitat needs:


1. Nest sites
2. Perches
3. **Hunting areas**
4. Impaling sites



Habitat needs:

1. Nest sites
2. Perches
3. Hunting areas
4. Impaling sites



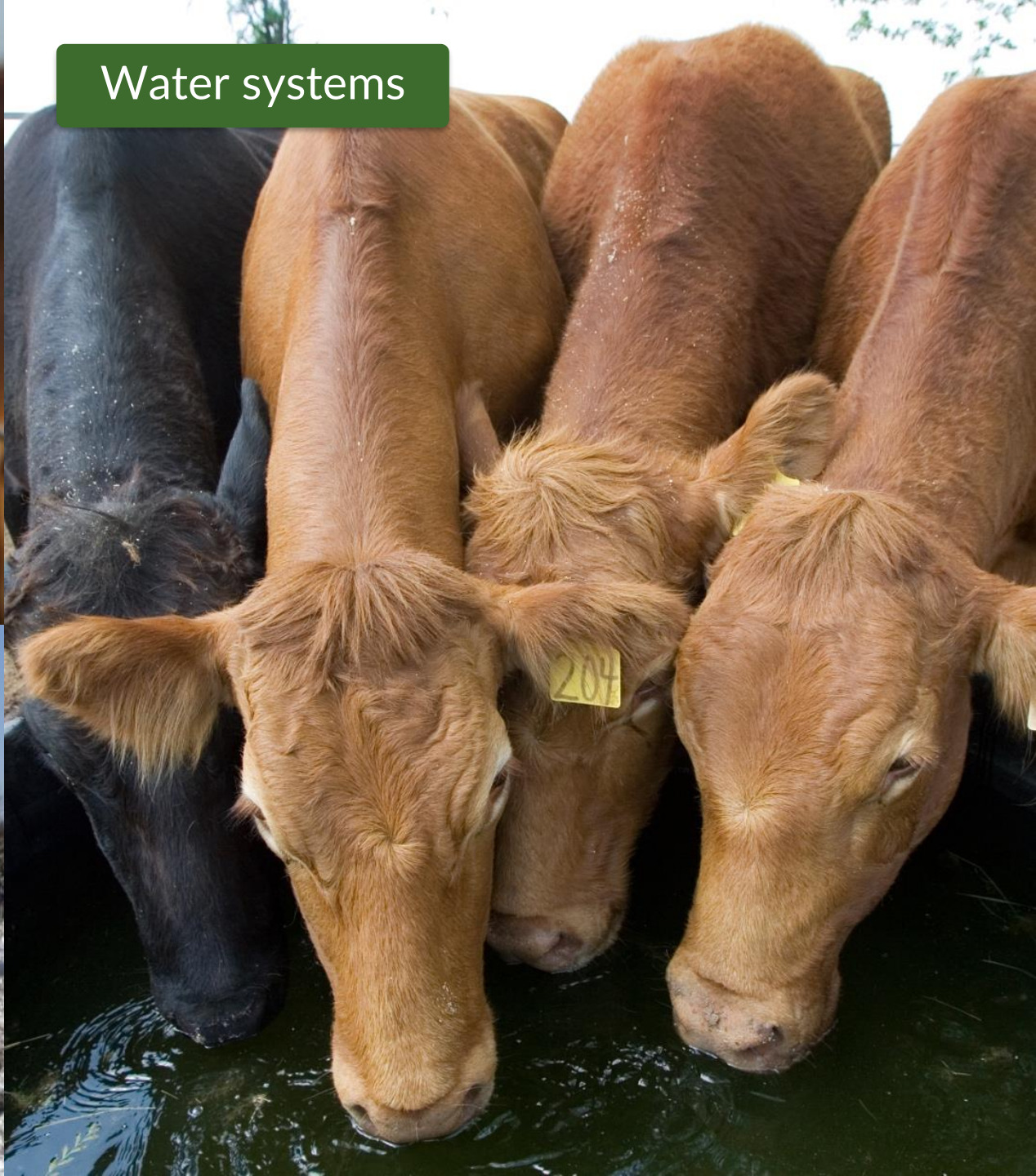


Habitat needs:

1. Nest sites
2. Perches
3. Hunting areas
4. Impaling sites



Cattle fencing

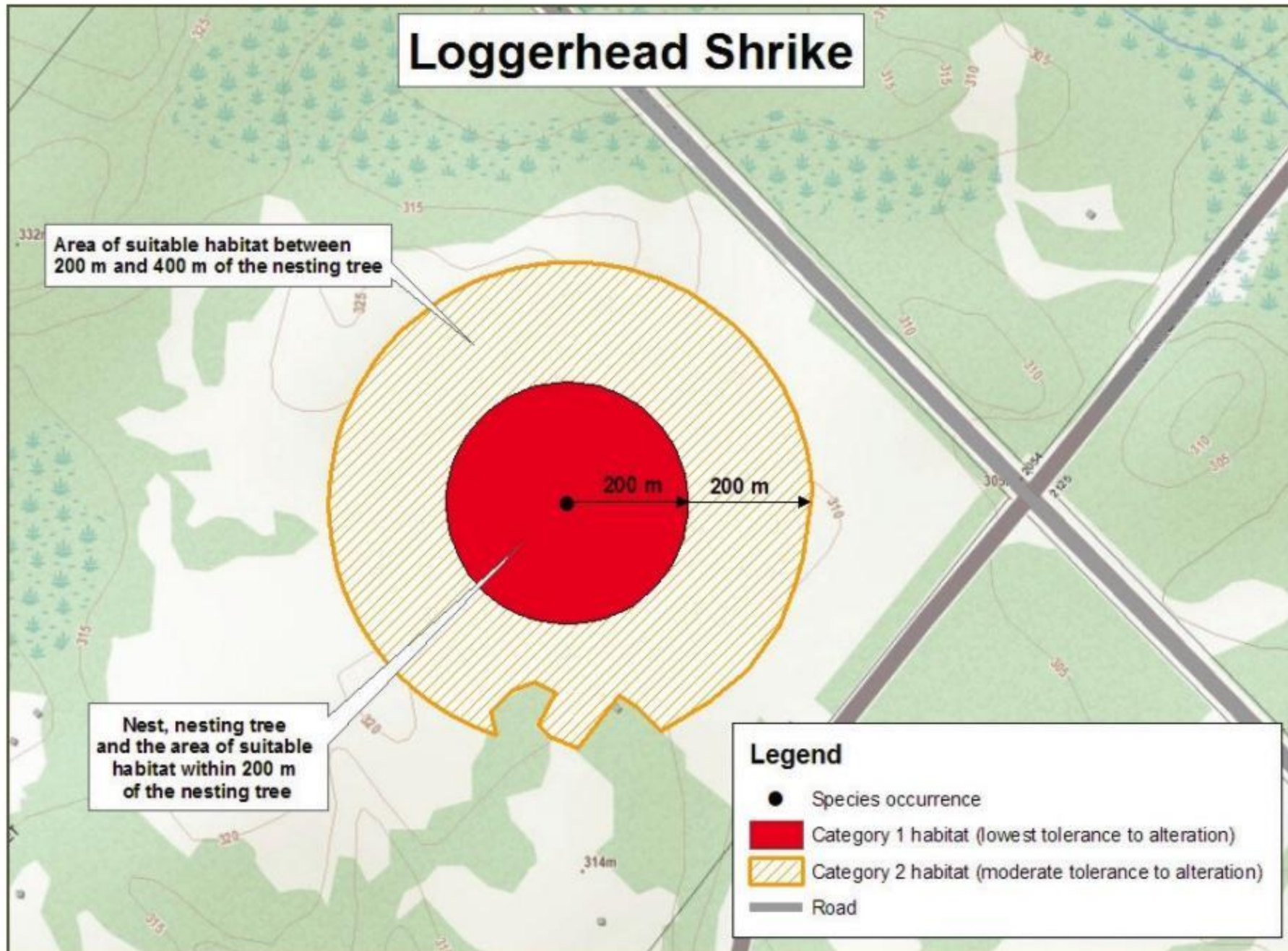


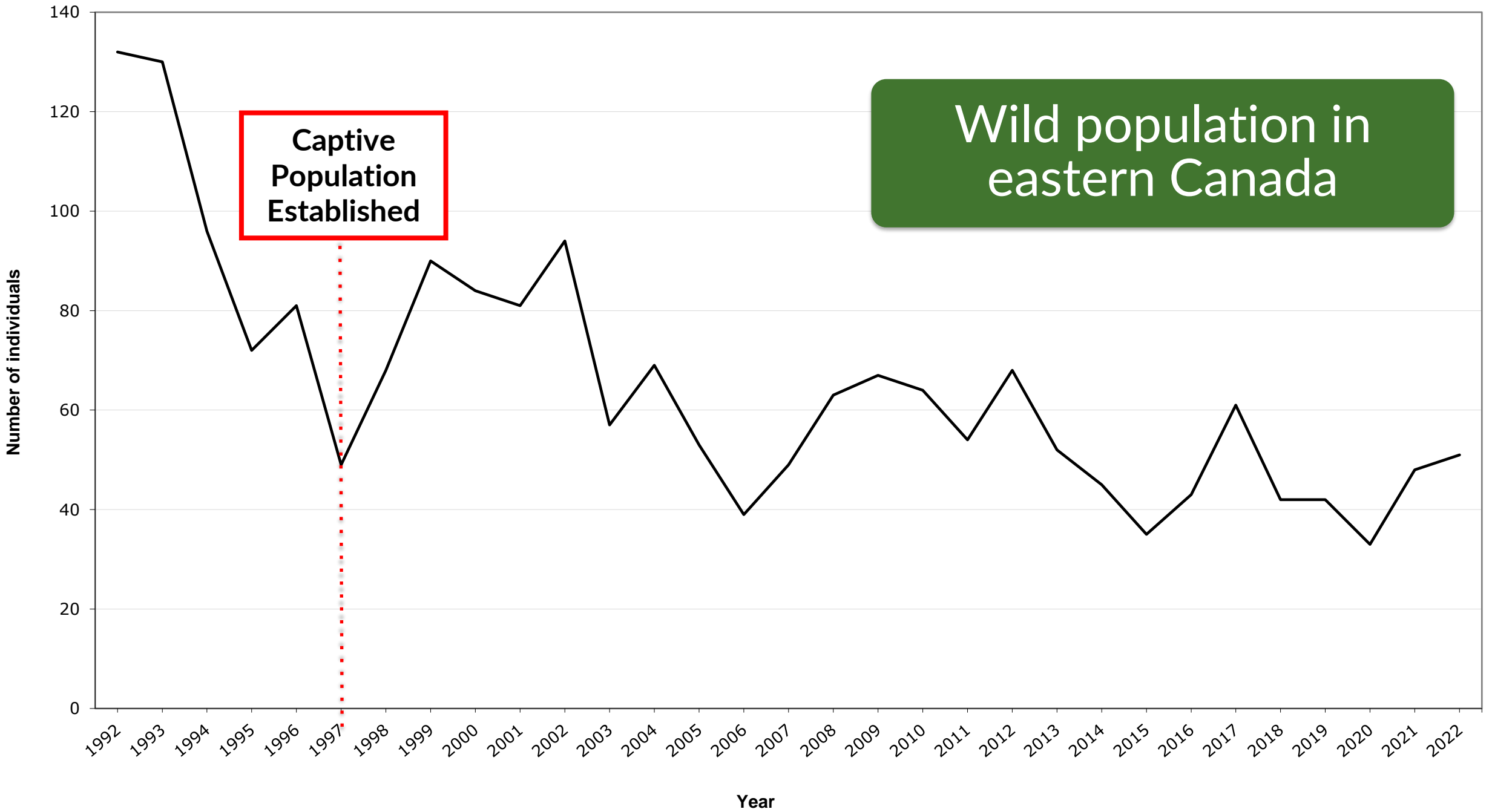
Water systems



Shrub thinning/piling

Sample application of the general habitat protection for Loggerhead Shrike





Conservation Breeding and Release





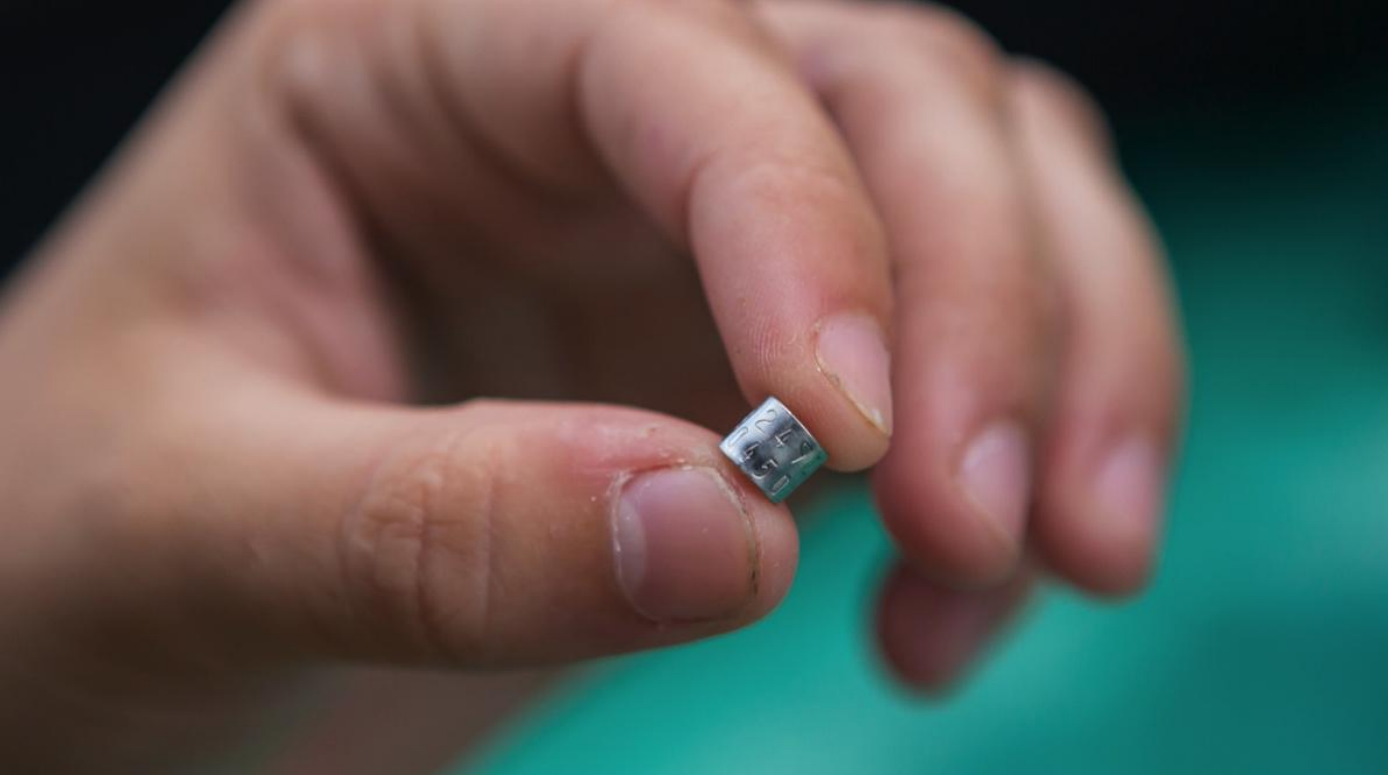
Parc OMEGA

Carden

Napanee







CAPTIVE COMBOS 2018

Left Leg	Right Leg	Date	Core (C/N)	Cage	Band Number
DB/SI	DB/DB	Jun 29	C		
DB/SI	DB/DG	Jun 29	C	A 107/E	219-44431
DB/SI	DB/GY	Jun 29	C	A 107/E	200-44431
DB/SI	DB/LB	Jun 29	C	A 107/E	200-44431
DB/SI	DB/LG	Jun 29	C	A 107/E	200-44431
DB/SI	DB/OR	Jun 29	C	A 107/E	200-44431
DB/SI	DB/RD	Jun 29	C	A 107/E	200-44431
DB/SI	DB/WH	Jun 29	C	A 107/E	200-44431
DB/SI	DB/YE	Jun 29	C	A 107/E	200-44431
DB/SI	DG/DB		C	A 107/E	200-44431
DB/SI	DG/DG	July 10	N		
DB/SI	DG/GY				
DB/SI	DG/LB				
DB/SI	DG/LG				
DB/SI	DG/OR	July 10			
DB/SI	DG/WH				
DB/SI	DG/YE				







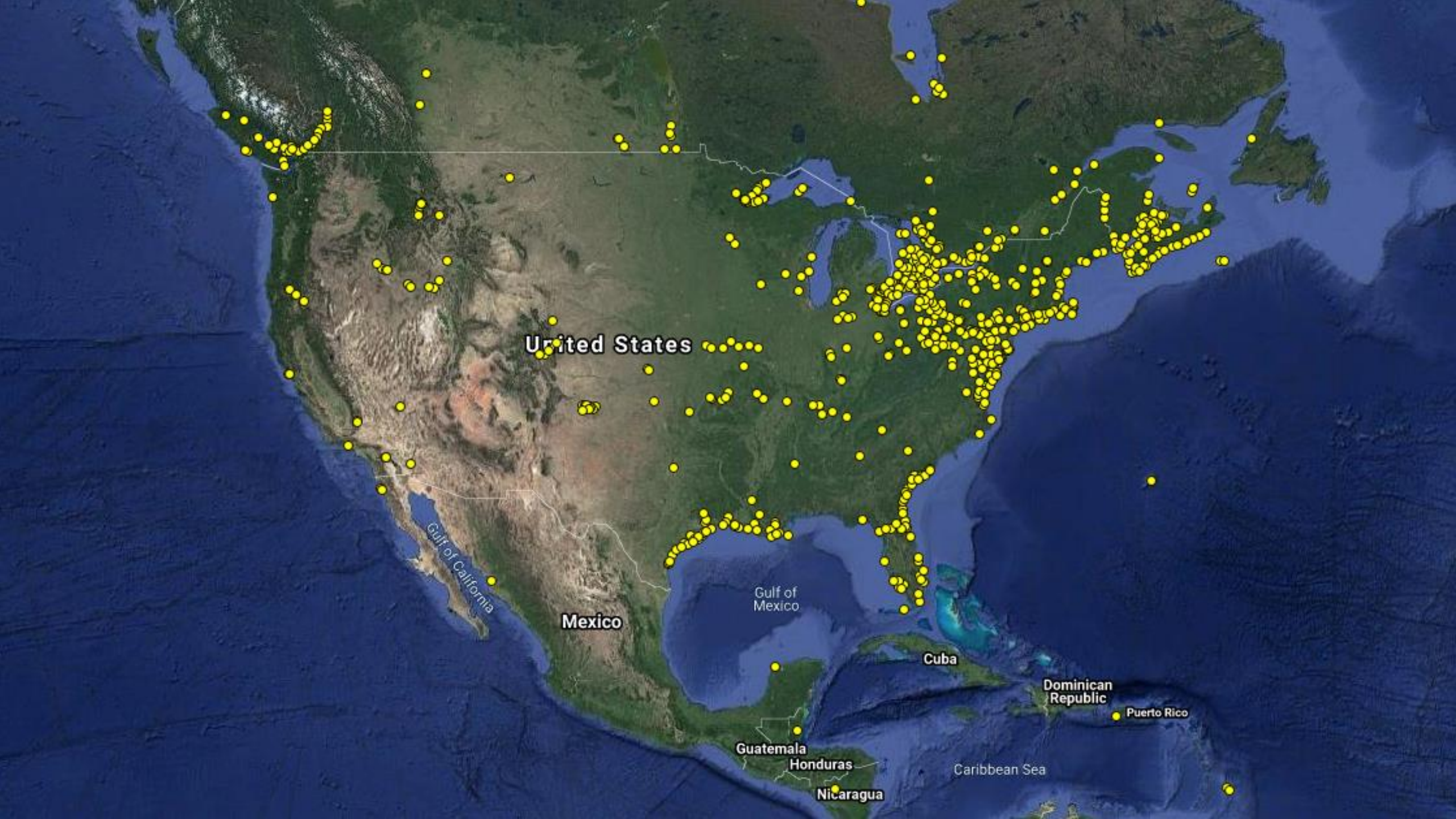
Soft-release of young:

- Acclimation time
- Pre-release training
- Supplementary food

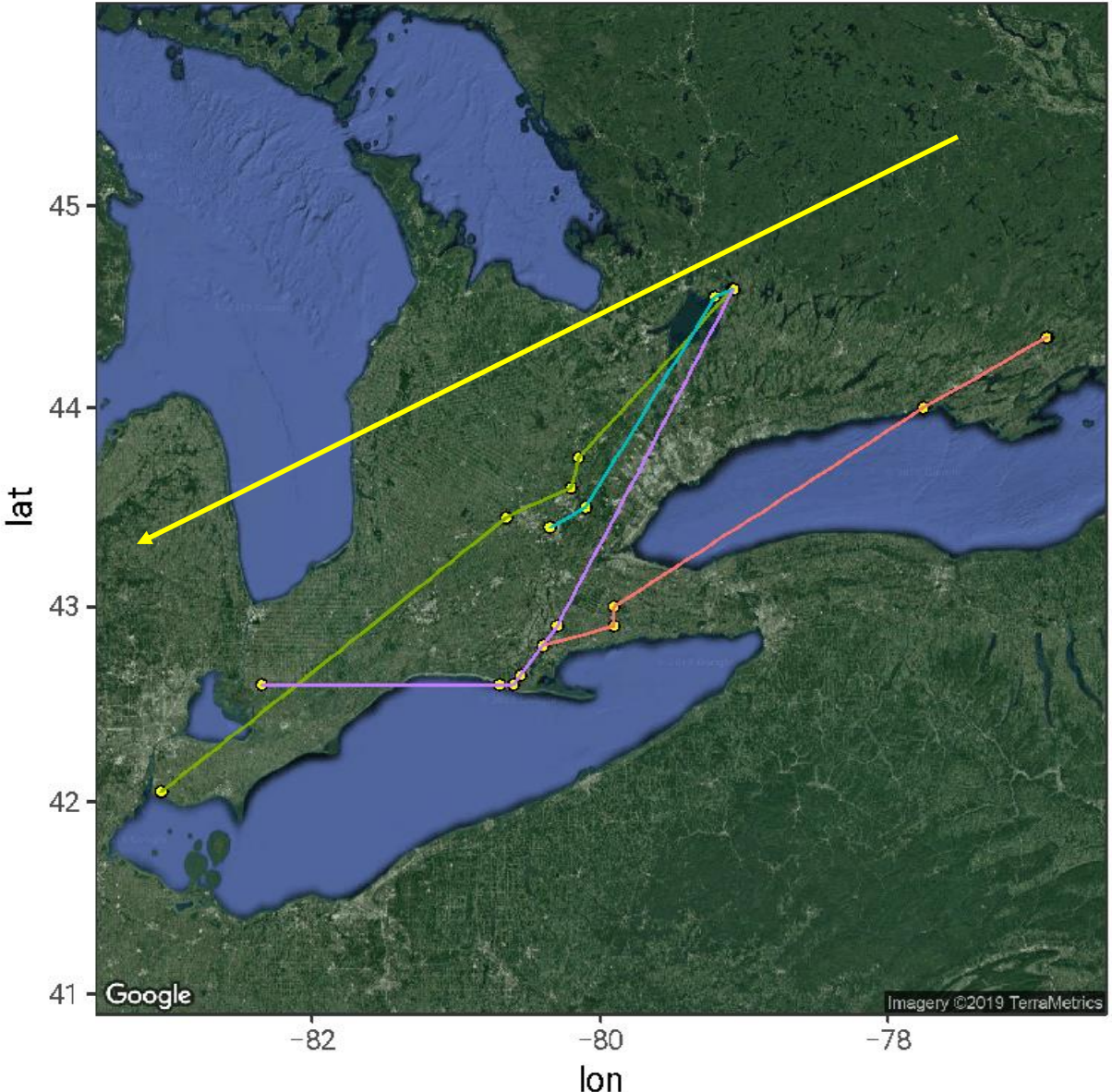




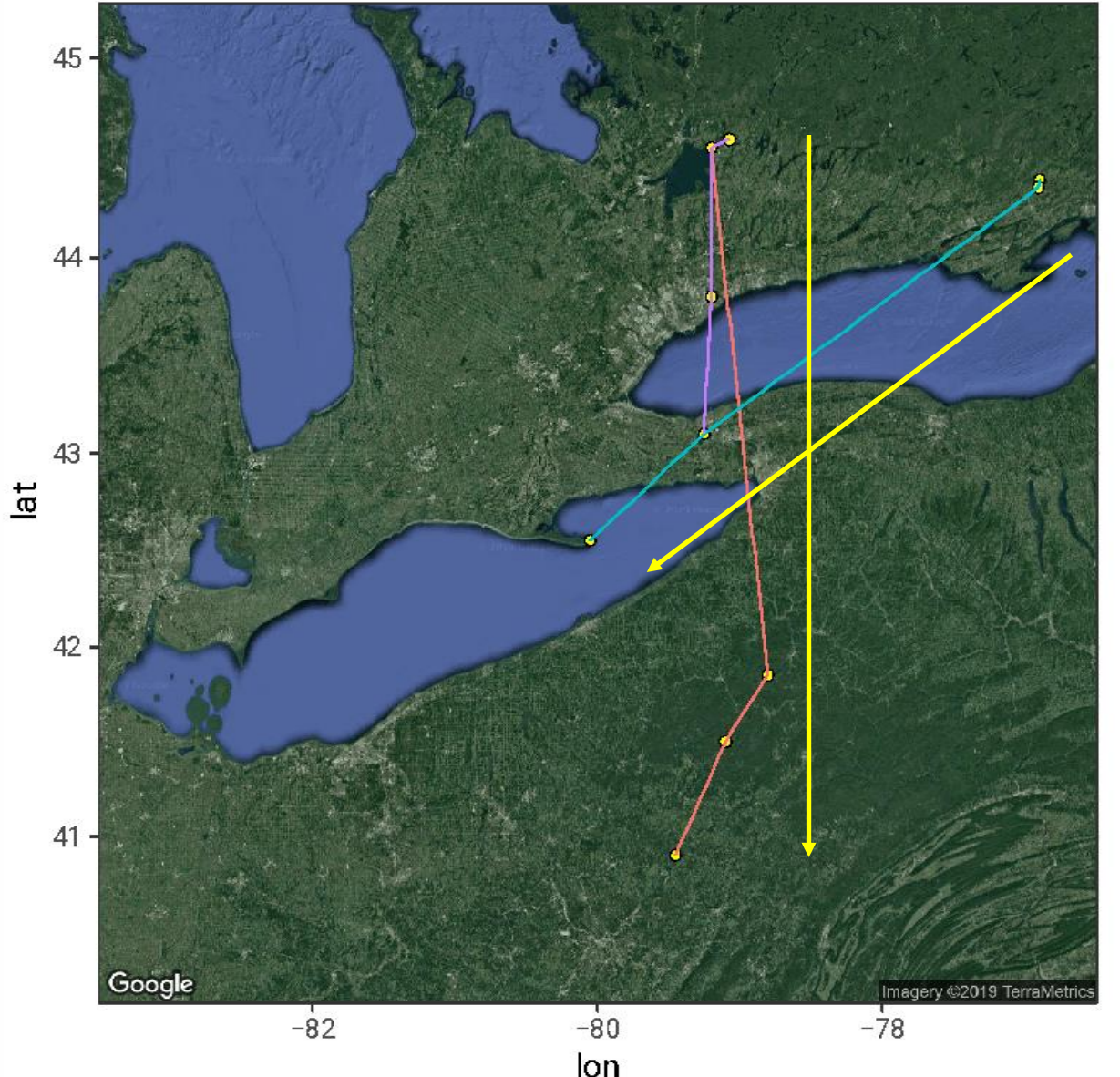




2017



2018



What we've accomplished

- Over 1300 captive-bred juveniles released
- Strong partnerships with facilities in Canada and the US
- Captive juvenile return rates up to 15% (average > 8% since 2012)
- Captive-origin birds making up ~33% of birds found in Ontario
- Wild pairings with a captive-origin bird contributing up to 50% of fledglings





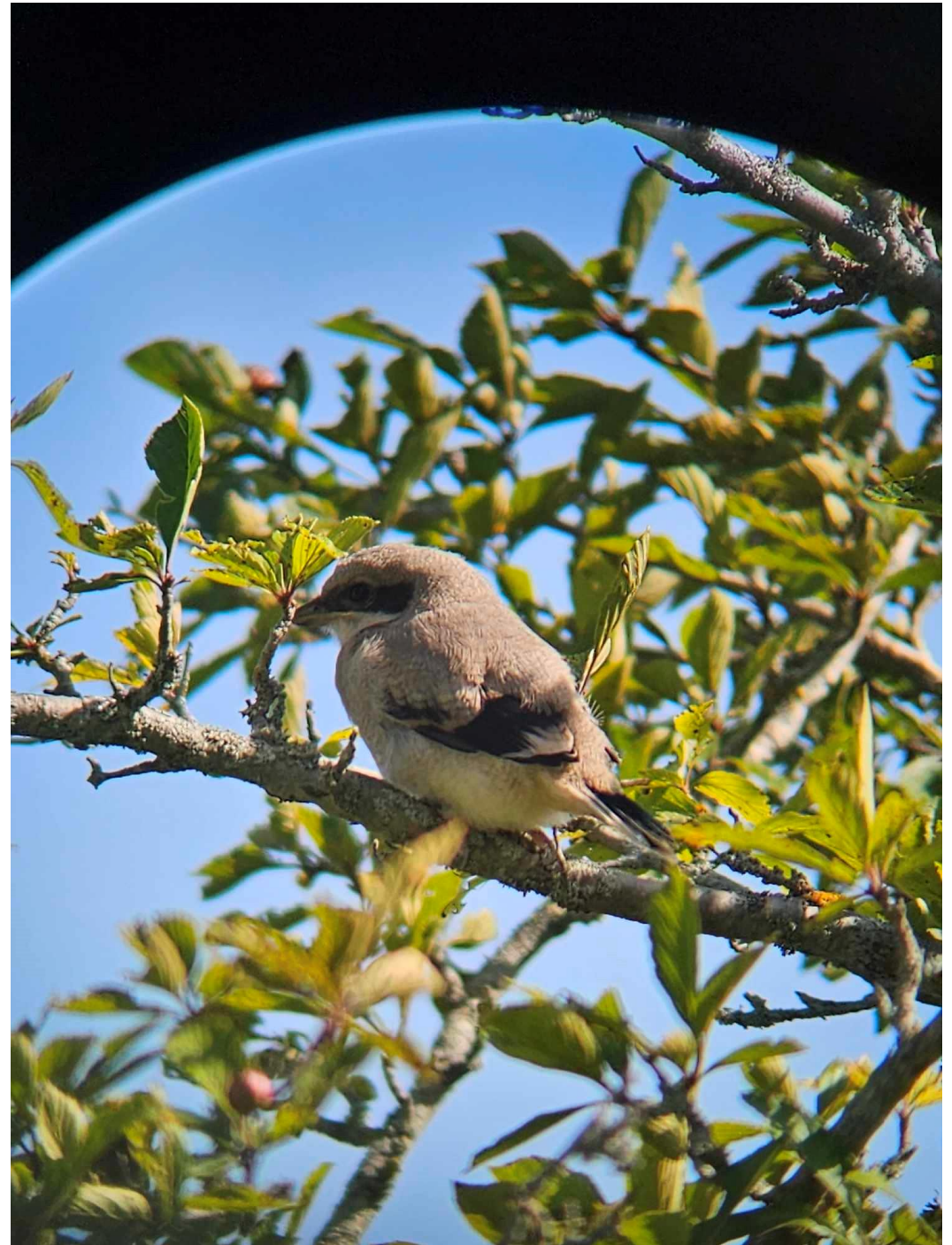


Wild population monitoring









Limiting factors:

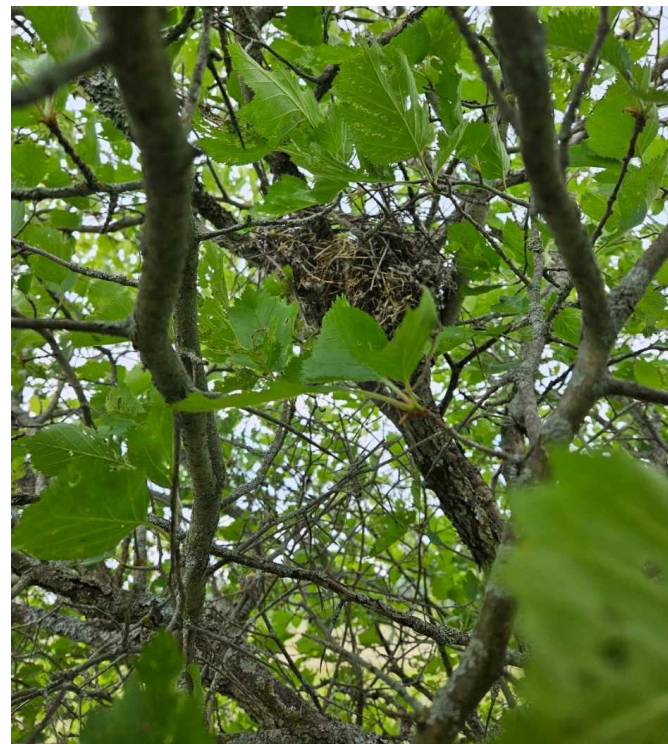
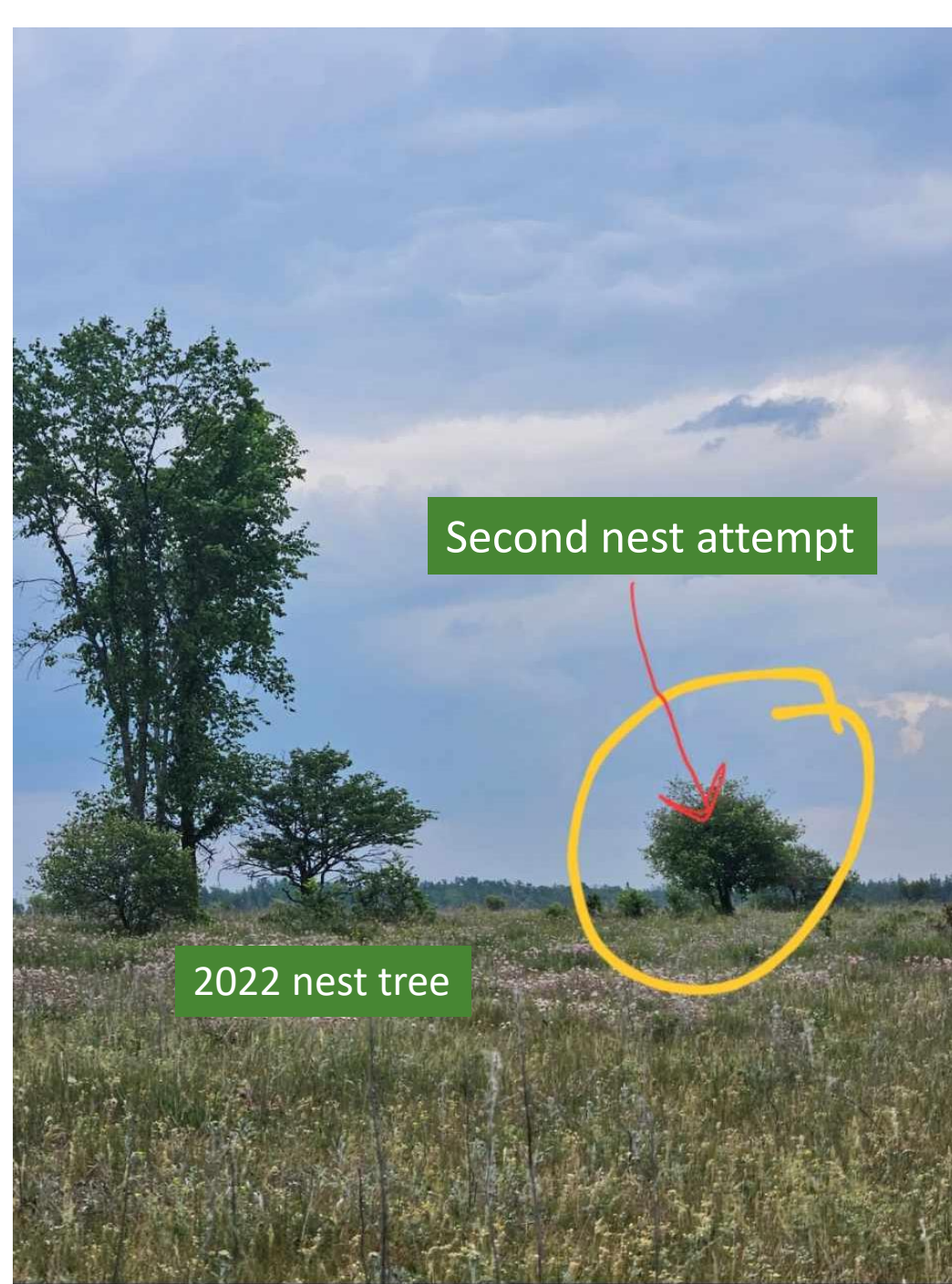
- Habitat loss
- Predation
- Road-related mortality
- Pesticides
- Climate change
- Disease (WNV)





PLOTWATCHER PRO 84C1

21-MAY-15 15:56:54 61% 20C)



Limiting factors:

- Habitat loss
- Predation
- Road-related mortality
- Pesticides
- **Climate change**
- Disease (WNV)





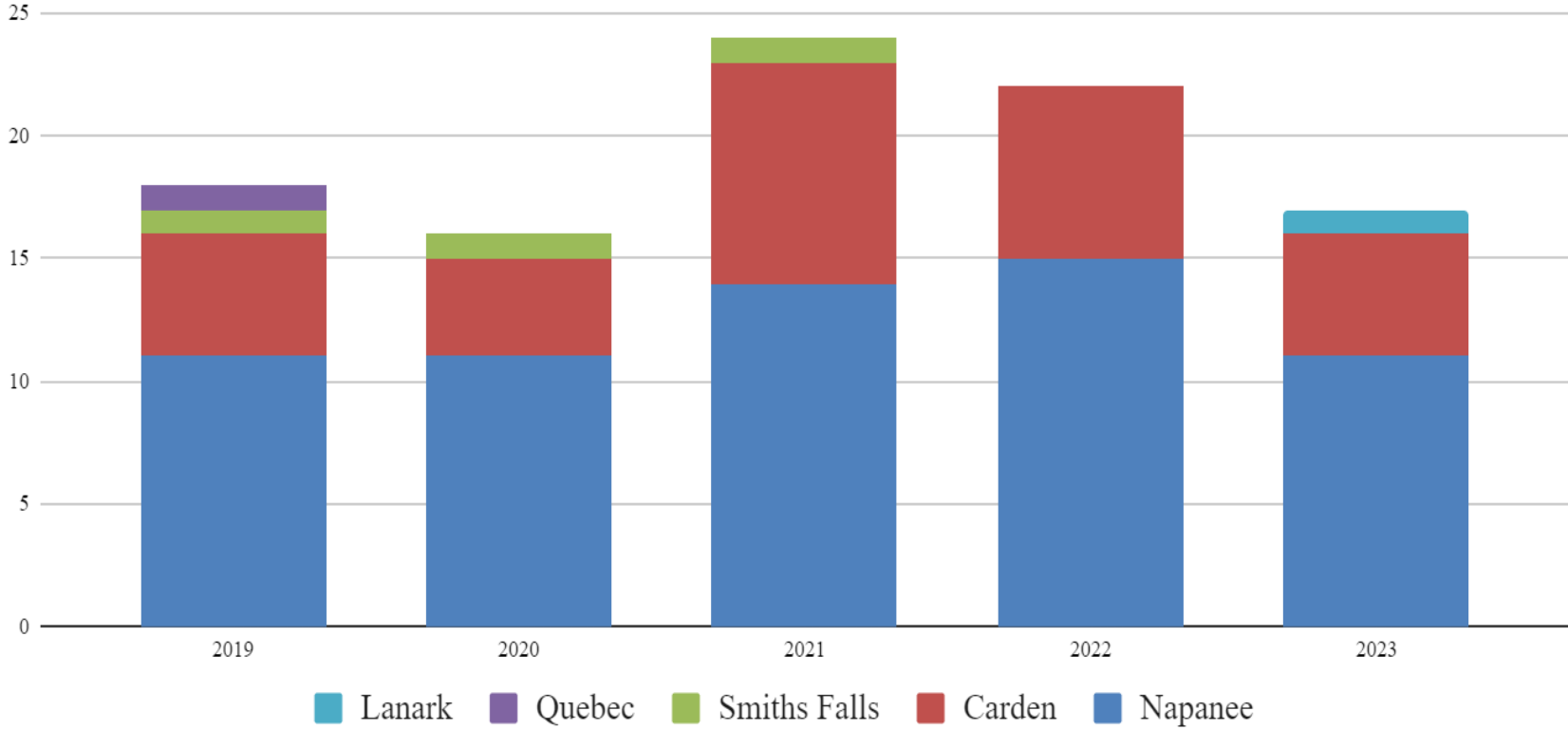
Car84C-1.1







Breeding pairs by year





LOGGERHEAD SHRIKE

WORKING GROUP

Range-wide collaboration

Species Conservation Planning

Multi-stakeholder participatory workshop to aid in long-term recovery planning



Project partners:

Local

- Private landowners
- Community members

Regional

- Carden Forum
- Napanee Plain Joint Initiative

National

- Loggerhead Shrike Recovery Team

International

- Loggerhead Shrike Working Group



What can you do to help?



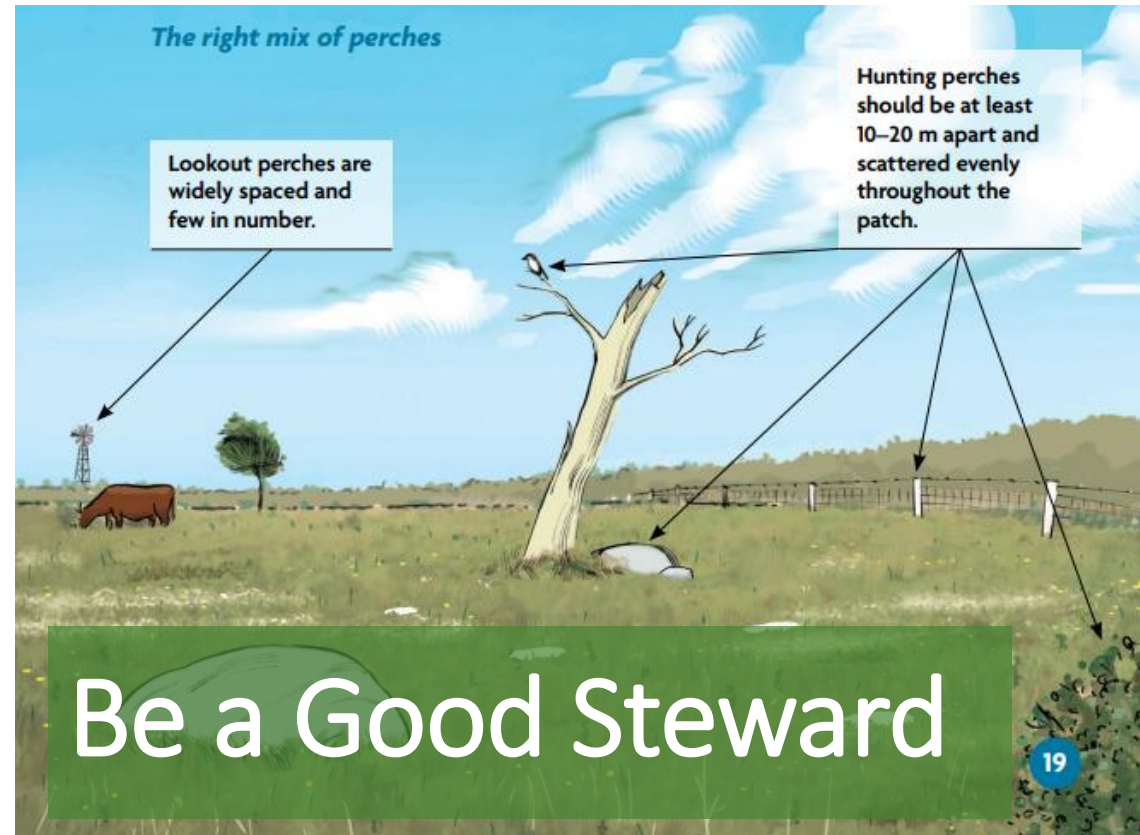
Loggerhead Shrike

AN ONTARIO
LANDOWNER'S
GUIDE



General recommendations for creating shrike-friendly habitat

- Maintain and expand existing pastureland.
- Graze or mow pastures to keep grass short (<30 cm) to help shrike spot and capture prey.
- Provide perching and nesting sites by maintaining existing shrubs or planting a few scattered trees and shrubs.
- Don't let shrubs take over.
- Avoid using pesticides whenever possible, because they can affect the prey that shrikes depend on. Let shrikes control pests for you!



Volunteer

Find a Conservation Volunteers event near you

From butterfly and bird inventories, to cleaning up beaches and removing invasive species, we offer a variety of events to suit your interests.

Don't see something that works for you? Sign up to be a volunteer [here](#) and we will be in touch when an opportunity that matches your interests becomes available.



NATURE
CONSERVANCY
CANADA



Report a Sighting



NATURAL HERITAGE
INFORMATION CENTRE

Email us at
[birds@wildlifepreservation.ca!](mailto:birds@wildlifepreservation.ca)



eBird



NESTING RAPTOR

DO NOT DISTURB

RAPTORS (BIRDS OF PREY) ARE SENSITIVE TO DISTURBANCE, ESPECIALLY DURING THE NESTING SEASON. PEOPLE, LOUD NOISES, PETS, AND EVEN APPROACHING TOO CLOSE CAN CAUSE ADULTS TO ABANDON THEIR YOUNG. WHILE THESE BIRDS ARE NOT CONSIDERED THREATENED OR ENDANGERED THEY ARE PROTECTED FEDERALLY BY THE MIGRATORY BIRD TREATY ACT, AND STATE LAWS PROHIBIT DISTURBANCES OF NESTING BIRDS.

Birdwatch Safely

Report illegal activity

Report any illegal activity related to plants and wildlife to [1-866-MOE-TIPS \(663-8477\)](tel:1-866-MOE-TIPS).

DO NOT DISTURB...

NESTING BIRDS IN THIS AREA

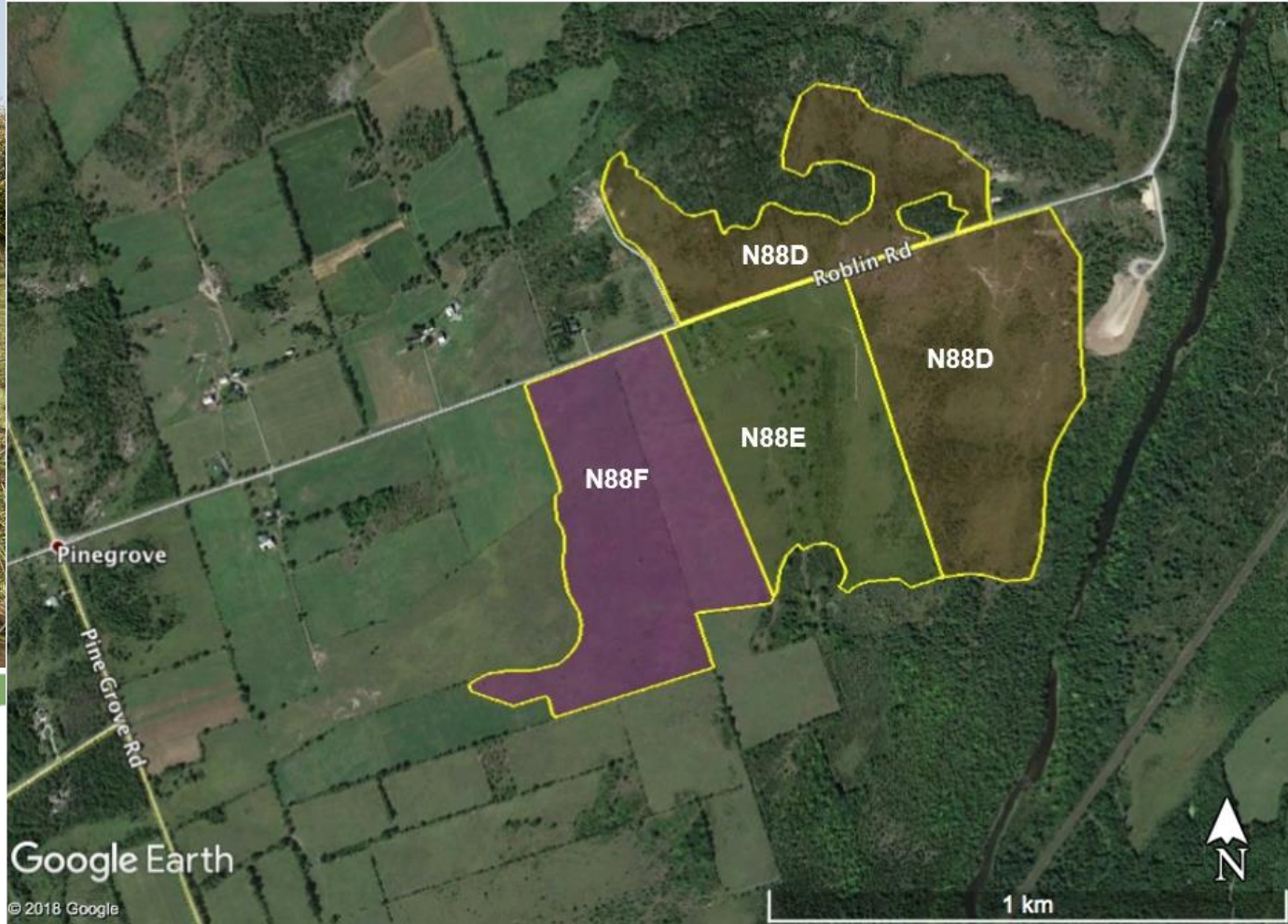
Please do not go any closer. Like any new family, these birds need peace and quiet.

KEEP WILDLIFE WILD

PLEASE Do
NOT
DISTURB

NESTING
BIRD

Join our Adopt-A-Site Program



**Adopt-A-Site Program
2022 Summary**



Donate



<https://wildlifepreservation.ca/ways-to-give/>

<https://wildlifepreservation.ca/donate/>

Questions?

h.hess@wildlifepreservation.ca



Canada's last
defence for
endangered
species.











