

Bumble Bees of South Central Ontario

YELLOW



Yellow
B. fervidus



Northern amber
B. borealis

ORANGE-BANDED/BOTTOMED



Tri-coloured
B. ternarius



Red-belted*
B. rufocinctus



Frigid
B. frigidus

CUCKOOS



Ashton cuckoo
B. bohemicus



Lemon cuckoo*
B. citrinus

BLACK-BOTTOMED



Common eastern
B. impatiens



Half-black**
B. vagans



Brown-belted
B. griseocollis



Confusing
B. perplexus



Two-spotted
B. bimaculatus



Rusty-patched
B. affinis

YELLOW-BANDED



American
B. pensylvanicus



Yellow-banded
B. terricola



Red-belted*
B. rufocinctus

Species in decline

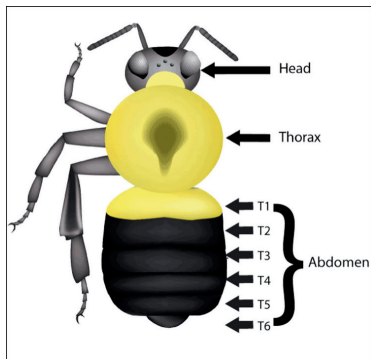
*Highly variable species. Not all patterns shown.

*Range and colour pattern overlap with Sanderson bumble bee.

wildlifepreservation.ca
pollinators@wildlifepreservation.ca



Bee Morphology



Females & Males

Male bumble bees emerge later in the season and have some of the following physical characteristics.

FEMALE



MALE



Males have:

1. Extra abdominal segment
2. Extra antenna segment
3. Thinner legs with no pollen baskets
4. Often longer/ shaggier hair

Males are difficult to identify to species by colour compared to females.

This is for quick reference for identifying the most common and declining bumble bee species in South Central Ontario. Only common colour pattern(s) for queens of each species is provided. If you encounter a different colour pattern or caste, refer to a more comprehensive resource.

Bumble bee illustrations: Paul Williams (identification and colour patterns) and Elaine Evans, Rich Hatfield (bee body design)

Bumble Bee ID Card - South Central Ontario © 2025 by Wildlife Preservation Canada is licensed under CC BY-NC-ND 4.0. To view a copy of this license, visit <https://creativecommons.org/licenses/by-nc-nd/4.0/>

Submit your Sightings to BumbleBeeWatch.org



Take a photo of a bumble bee



Log in and upload your photo(s)



Identify the bee species



Sighting will be verified by an expert

