

# Bumble Bees of Interior BC

## ORANGE-BANDED



**Hunt's**

*B. huntii*



**Black-tailed**

*B. melanopygus*



**Red-belted\***

*B. rufocinctus\**

## ORANGE BOTTOMED



**Yellow head\***

*B. flavifrons\**



**Central**

*B. centralis*



**Fuzzy-horned**

*B. mixtus*



**High country\*\***

*B. kirbiellus\*\**

## YELLOW BANDED



**Vancouver**

*B. vancouverensis*



**Suckley cuckoo**

*B. suckleyi*



**Red-belted\***

*B. rufocinctus\**

## YELLOW



**Nevada**

*B. nevadensis*



**Yellow head\***

*B. flavifrons\**



**Half-black**

*B. vagans*



**White-shouldered**

*B. appositus*

## WHITE BOTTOMED



**Western**

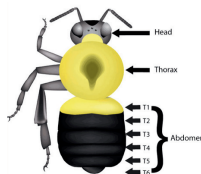
*B. occidentalis*



**Ashton cuckoo**

*B. bohemicus*

## Bee Morphology



### Species in decline

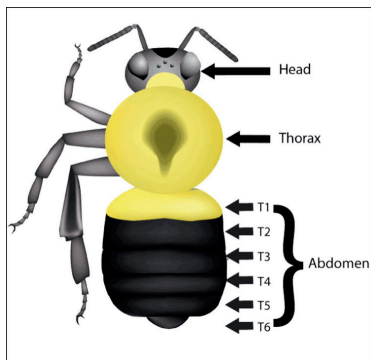
\*Highly variable species. Not all patterns shown.

\*\* Species is locally rare

wildlifepreservation.ca  
pollinators@wildlifepreservation.ca



# Bee Morphology



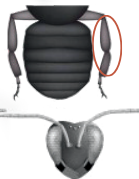
# Females & Males

Male bumble bees emerge later in the season and have some of the following physical characteristics.

**FEMALE**



**MALE**



**Males have:**

1. Extra abdominal segment
2. Extra antenna segment
3. Thinner legs with no pollen baskets
4. Often longer/ shaggier hair

Males are difficult to identify to species by colour compared to females.

*This is for quick reference for identifying the most common and declining bumble bee species in interior British Columbia. Only common colour pattern(s) for queens of each species is provided. If you encounter a different colour pattern or caste, refer to a more comprehensive resource.*

*Bumble bee illustrations: Paul Williams (identification and colour patterns) and Elaine Evans, Rich Hatfield (bee body design)*

Bumble Bee ID Card - Interior B.C. © 2025 by Wildlife Preservation Canada is licensed under CC BY-NC-ND 4.0. To view a copy of this license, visit <https://creativecommons.org/licenses/by-nc-nd/4.0/>

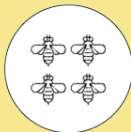
## Submit your sightings to BumbleBeeWatch.org



Take a photo of a bumble bee



Log in and upload your photo(s)



Identify the bee species



Sighting will be verified by an expert



Special thanks to:



[www.bcnativebees.org](http://www.bcnativebees.org)